



## North Spitsbergen Explorer

5<sup>th</sup> June 2026 – 12<sup>th</sup> June 2026

On board *m/v Ortelius*



*M/V Ortelius* was built in 1989 in Gdynia, Poland as a special-purpose research vessel for the Russian Academy of Science. She was originally named “Marina Svetaeva” after a well-known Russian poet. The vessel was purchased by Oceanwide Expeditions in 2011, re-flagged in The Netherlands, and re-named Ortelius. She was extensively re-fitted in 2019 and complies with the latest SOLAS-regulations (Safety Of Life At Sea). *M/V Ortelius* is 91.25 m long, 17.2 m wide and has a maximum draft of 5.4 m. She has ice class UL1 (Equivalent to 1A), 10.5 knots average cruising speed and propulsion is 6 ZL 40/48 SULZER. Ortelius is named after the Dutch cartographer Abraham Ortelius (1527-1598) who published the first modern world atlas, the *Theatrum Orbis Terrarum* (Theatre of the World) in 1570. Her home port is Vlissingen.



## Captain Ernesto Barria

[Chile]

and his international crew of 53

Chief Officer:	<b>Don Buren</b>	[The Netherlands]
Second Officer:	<b>Sander Witsenburg</b>	[The Netherlands]
Third Officer:	<b>Ian Vicente</b>	[Philippines]
Chief Engineer:	<b>Andrej Abakumov</b>	[Lithuania]
Second Engineer:	<b>Ionut Daraban</b>	[Romania]
Third Engineer:	<b>Twan Boeije</b>	[The Netherlands]
Fourth Engineer:	<b>Sanne Van Beers</b>	[The Netherlands]
Chief Electrical Engineer	<b>Stefan Kirov</b>	[Bulgaria]
Hotel Manager:	<b>Volodymir Cherdnychenko</b>	[Ukraine]
Assistant Hotel Manager:	<b>Charlotte Laumen</b>	[The Netherlands]
Head Chef:	<b>Heinz Hacker</b>	[Austria]
Sous Chef:	<b>Edward Nunag</b>	[Philippines]
Sous Chef	<b>Sergiy Sklyarov</b>	[Ukraine]
Bosun:	<b>Eniano Agarin</b>	[Philippines]
Bosun:	<b>Lauren Malatag</b>	[Philippines]
Bartender:	<b>Raquel Queri</b>	[Philippines]
Ship's doctor:	<b>Marieke Timmerman</b>	[Netherlands]
Expedition Leader:	<b>Ali Liddle</b>	[United Kingdom]
Assistant Expedition Leader:	<b>Pippa Low</b>	[United Kingdom]
Expedition Guide:	<b>Allan White</b>	[Falkland Islands]
Expedition Guide:	<b>Claudio Ghiglione</b>	[Italy]
Expedition Guide:	<b>George Kennedy</b>	[Australia]
Expedition Guide:	<b>Marco Rosso</b>	[Italy]
Expedition Guide:	<b>Koen Hoekemeijer</b>	[The Netherlands]
Expedition Guide:	<b>Alexander Romanovskiy</b>	[Russia]
Expedition Guide:	<b>Mark Whiffin</b>	[United Kingdom]

**WE WELCOME YOU ON BOARD!**

## Day 1 – Friday 5<sup>th</sup> June, Longyearbyen, Embarkation Day

12:00 GPS Position: 78°14.6' N / 015°32.6' E

Wind: N 2 • Sea: Calm • Weather: Clear • Air Temperature: 9.0°C

---

Today was the day our Oceanwide adventure was going to start. We had all made our way to Longyearbyen in Svalbard. For many of us, it was our first time to be this far north, but despite being in the high Arctic, the weather didn't resemble our expectations. It was a bright sunny day with hardly any wind and an abundantly shining sun.

Longyearbyen is the only *city* in Svalbard with around 2500 inhabitants. But it's a lively place with many shops and places with good coffee and even better cakes. Some of us bought another hat or pair of gloves whereas others enjoyed lunch outside one of the cafes.



Oceanwide expected us at the main pier between 4:00 PM and 5:00 PM from where we would take a bus to our home for the next 7 days, M/V Ortelius.

Ortelius was moored at the so-called *Coal Pier*. Ortelius looked cool and rugged and seeing the ship immediately sparked our excitement. We received a warm welcome from the entire crew and were guided to our cabins.



Soon after, expedition leader Ali invited us to the bar for a mandatory safety drill. This is a standard procedure that was explained by our Chief Officer Don. Once the alarm signal had sounded, we took our bulky orange life jackets to the bar which was our *muster station*. After the *abandon*

*ship* command was given, we made our way up to the lifeboat deck where 2<sup>nd</sup> Officer Sander gave us more instructions and information. With the sun still out, it was pleasant to be outside.



While we finished the drill, the deck team had started preparations for our departure. Many of us were on the outside decks while Ortelius slowly left the pier and made its way out into Isfjorden. To our surprise we spotted our first walrus which were lying on the beach close to the coal pier.

Then it was time for the official welcome. Expedition leader Ali introduced herself and the expedition team which consisted of many different nationalities and backgrounds.

Then she talked about the adventure that lay ahead of us and where we planned to go. Hotel Manager Vova provided us with useful information about the ship before the captain took over the microphone. Captain Barria spoke inspirational words before toasting the official start of the expedition. We couldn't wait to experience it all!



Dinner was served and afterwards many of us decided to spend more time on the outside decks to enjoy the beautiful sunny evening, whereas others decided to turn in early to get a good sleep.

Good night, everyone!

## Day 2 – Saturday 6<sup>th</sup> June, Hamiltonbukta & Buchananhavøya

12:00 GPS Position: 79°47.4'N / 011°55.9'E

Wind: SE 3 • Sea: Slight • Weather: Partly cloudy • Air Temperature: 9.0°C

---

The first day of our expedition began with a sense of excitement and anticipation. After breakfast, we gathered in the bar for a welcome briefing from expedition leader Ali, who outlined the plans for the day and introduced us to the adventures that lay ahead. With the Arctic landscape stretching beyond the windows and new experiences awaiting us, there was palpable eagerness among guests as we prepared for our first excursion.

Our first activity was a Zodiac cruise in Hamiltonbukta, a sheltered bay located along the northern coast of Spitsbergen, within the spectacular region of Raudfjorden. Surrounded by rugged mountains, glaciated slopes, and broad Arctic tundra, the bay offers a striking introduction to the landscapes of northwestern Svalbard. The calm waters and dramatic scenery provided ideal conditions for our first excursion, allowing us to fully appreciate the scale and beauty of this remote wilderness.



Wildlife quickly became the focus of our attention when two Arctic foxes were spotted running across the tundra. Their swift movements and striking appearance provided a wonderful introduction to Svalbard's wildlife.

As we continued along the shoreline, we approached a busy bird cliff with lots of activity. Thousands of kittiwakes circled overhead and crowded the ledges, while Brünnich's guillemots occupied every available space on the rock face and waters below. The constant movement and noise created an impressive spectacle. In the bay itself, two bearded seals were observed resting near the water's surface, occasionally surfacing to investigate our presence before disappearing once more beneath the calm sea.



After a rewarding morning on the water, we returned to the ship for lunch while the vessel repositioned to the western side of Buchananhavøya. The weather remained favorable, and anticipation grew for our first extended hike of the voyage.

Once ashore, we set off on long, medium and leisurely hikes towards the northern part of Buchananhavøya.

The route crossed gently rolling tundra interspersed with patches of snow, gradually gaining elevation and offering increasingly expansive views across the surrounding landscape. From the higher ground, we were treated to sweeping panoramas of the coastline, distant mountains, and the Arctic waters beyond. After descending from the ridge, the hike continued around a freshwater lake, whose calm surface mirrored the surrounding scenery. Throughout the walk, there were plenty of opportunities to pause for photographs, enjoy the fresh air, and immerse ourselves in the vast wilderness of the High Arctic.



Back on board, we gathered in the lounge for the evening recap. Pippa shared fascinating information about the seals we had encountered during the day, while Mark introduced us to the different species of guillemots found in Svalbard and their remarkable adaptations to life in the Arctic.

Dinner was served shortly afterwards, providing the perfect opportunity to reflect on the day's experiences and share stories with fellow travellers. As the evening progressed, the ship arrived off Smeerenburg, a historic area famous for its wildlife and whaling heritage.



Along the shoreline, several walrus could be seen hauled out together, resting peacefully on the beach. We gathered on deck to observe these impressive animals as they shifted slowly among the group. Then, as if the day had not already provided enough excitement, three polar bears were spotted resting in the snow nearby. The bears appeared completely relaxed,

offering exceptional views from the ship. Cameras clicked continuously as guests watched these magnificent Arctic icons against the stark white landscape.

With walrus on the shore and polar bears resting peacefully in the evening light, it was a truly memorable conclusion to our first full day of exploration in Svalbard.

## Day 3 – Sunday 7<sup>th</sup> June, Faksevågen & Alkefjellet

12:00 GPS Position: 79°33.0'N / 017°40.6'E

Wind: Light Air • Sea: Rippled • Weather: Partly Clouded • Air Temperature: 7°C

---

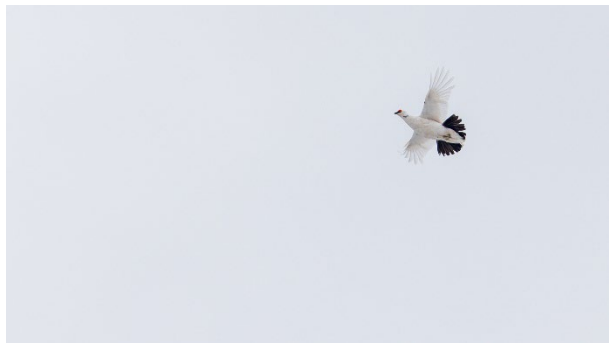
After a turbulent night transiting along Svalbard's northern coastline, we awoke to overcast skies in the relative shelter of Lomfjorden. As we enjoyed another delicious breakfast prepared by our galley team, we continued deeper into the fjord. The skies gradually began to clear, with beautiful rays of sunshine dancing across the fast ice. And as we turned west, we enjoyed our first views of Faksevågen—our destination for this morning's activities.



As the expedition team went ashore to scout the landing site, we donned our waterproofs and lifejackets and waited patiently at the gangway. After a short Zodiac ride, we split into our hiking groups and began our traverse across the beautiful Arctic landscape.

The hikers headed up onto the plateau, dodging dense snow

patches in search of favourable terrain. Some, nonetheless, found themselves sinking to their knees in the slushy summer snow from time to time.



The real highlight of the morning was a Rock Ptarmigan, with all groups enjoying excellent views of these northern residents. The distinctive white males flew through the sky, their crimson-red caruncles sparkling against the tundra, whilst the camouflaged females moved cautiously across the landscape.

The long hikers enjoyed a brief Arctic fox encounter on their journey, whilst the short hikers were rewarded with beautiful views of reindeer along the shoreline.

After a wonderful morning ashore, all groups returned safely to the landing site, their memory cards full of beautiful images and their minds at ease after a refreshing morning in the Arctic wilderness.

Once back on board, we enjoyed another excellent lunch from our galley team before settling in for an afternoon ship's cruise through Lomfjorden.

Along the way, we spotted bearded seals resting on the ice and admired the area's unique geology, including stunning views of a dolerite intrusion cutting through Permian limestone.

We continued onward, entering Hinlopen Strait before turning south towards our afternoon destination: Alkefjellet. Upon our arrival, we were greeted by fog and wind. However, with a little patience, good things came our way. After half an hour, the skies cleared, the winds dropped, and we were ready for our Zodiac cruise.



A true highlight of Svalbard, the 60,000 breeding pairs of Brünnich's Guillemots lining the cliffs of Alkefjellet did not disappoint. They buzzed overhead like bees around a hive, diving to and from the cliffs in an endless flurry of activity. As we neared the northern cliffs, we spotted two Arctic foxes scampering along the slopes in search of food, providing endless entertainment.

Then, just as we were preparing to head back, the captain radioed from the bridge to report a group of beluga whales passing through the strait. The Zodiacs quickly lined up, and we were treated to several sightings of these curious white whales as they surfaced in the shallow waters beneath the cliffs.

After a mammoth 3.5-hour Zodiac cruise, we finally returned to the vessel, ready for dinner. As we entered the dining room, many of us thanked the chefs and crew for delaying the meal and allowing us the opportunity to enjoy such a spectacular Arctic afternoon.

After dinner, we gathered in the lounge for our delayed recap before eventually retreating to our cabins, weary but exhilarated after another incredible day here in Svalbard.



## Day 4 – Monday 8<sup>th</sup> June Phippsøya & Chermisideøya

12:00 GPS Position: 80°40.8'N / 020°56.5'E

Wind: S 2 • Sea: Calm • Weather: Sunny • Air Temperature: 8°C

We've really made it far north! It almost doesn't feel real. The legendary group of islands known as the "Seven Islands" — the northernmost landmasses belonging to the Svalbard archipelago. One glance through binoculars, or even out of the window, was enough to feel the difference. No tundra, no flowers, no moss-covered slopes — only massive boulders and bare rock, lightly coated with a velvet layer of lichen.

The weather was beautiful: the sun was shining and a light breeze was blowing. Perfect conditions for a landing on Phippsøya.

Ortelius slowed down and gradually approached the strait separating Phippsøya from its neighbour, Martensøya. Members of the expedition team gathered on the bridge and scanned the shoreline through binoculars to make sure no polar bears were roaming around and that a landing would be safe. But then one of the guides spotted something suspicious near the water, in a snowfield on Martensøya! All binoculars and spotting scopes immediately turned in that direction. And indeed — a bear! What a nuisance! Well, as the Americans say, you can make lemonade out of lemons. We would figure something out.



The bear was lying in the snow, fast asleep, occasionally moving its paws. It seemed that today's weather was uncomfortably hot for it, and in an attempt to cool down it had sprawled out on the snow, barely even lifting its head. It would have been nice to get a closer look, but the strait was too narrow — Ortelius would run

aground. So, what now?

Of course, there could be no question of a shore landing. It was decided to do a Zodiac cruise instead. Once the boats were launched, we gathered on the open deck and, in groups of ten, took our places in the Zodiacs. As soon as all the boats were filled and only our hotel manager Vova remained on deck, we set off. The Zodiacs formed a long line and moved at minimum speed, one after another, towards the bear. The expedition leader kept measuring the distance with a rangefinder to ensure we did not get too close and break the rules.

The bear paid no attention to us at all, occasionally lifting its head lazily, only to bury it back in the snow again. Meanwhile, we kept pressing the shutter buttons on our cameras and focusing our binoculars on the animal. Only from time to time, when a Zodiac's position was unfavourable and the sun was directly behind the bear, making the lighting poor and unflattering, did we pause and look around at the surrounding scenery.

The main surprise, however, was still ahead of us. Soon we noticed another bear coming down the slope from behind a cape, moving in our direction! We spotted it from a distance — it was slowly descending a snowy ridge, then, as if deciding to have a bit of fun, it simply flopped onto the snow and slid downhill, after which it got up, shook itself off, and continued walking along the shore.



It soon became clear to everyone that this was not a male bear, but a female. Our guides, highly experienced in observing polar bears, quickly clarified this.

The female did not engage with the sleeping male in the snow and, as soon as she detected him, she turned away and kept a respectful distance.



It soon became clear what had attracted these formidable northern predators. A couple of hundred metres away on the shore, almost at the water's edge, lay the carcass of a walrus. Polar bears do not shy away from carrion; at the same time, they cannot hunt adult walruses because of their dangerous tusks and enormous size. But when a walrus dies, it becomes a feast. The male sleeping in the snow had apparently already eaten his fill and was now slowly digesting his meal.

The female approached the carcass, tasted it, then tore off a piece of flesh with her teeth, dragged it aside, and began to eat.

Apparently, the dead walrus did not impress her much, and so she moved onto a headland, entered the water, and swam across the strait towards Phippsøya.

We, after having watched the bears, made a small detour along the coast of the nearest bay on Phippsøya and then returned to the ship, as it was time for lunch.

While we were eating, Ortelius set course south toward Chermsideøya, where an afternoon landing was planned.

When the anchor chain stopped rattling and the ship came to a standstill, we boarded the Zodiacs and sped toward the shore. The ride was not short — a good five minutes each way.

On the sandy beach, strewn with driftwood and, unfortunately, plastic, the expedition team was waiting for us. We split into three groups.





The long hikers set off to climb a nearby mountain, the medium hikers walked along the shore to gain elevation a bit further on, and the leisurely hikers slowly wandered along the beach, enjoying the scenery and picking up plastic litter scattered on the ground, thereby helping the Arctic environment.

A few hours later, tired but happy, everyone returned to the landing site. It was time to head back to Ortelius for dinner, to sort through hundreds of new photos, and to rest. Tomorrow

— another exciting day. Ahoy!

## Day 5 – Tuesday 9<sup>th</sup> June, Monacobreen & Texas Bar

12:00 GPS Position: 79°31.9'N / 012°26.1'E

Wind: VAR 1 • Sea: Rippled • Weather: Sunny • Air Temperature: 8.0°C

---

The day began under flawless Arctic conditions as Ortelius sailed deep into Liefdefjorden. Clear blue skies stretched across the horizon, and the calm sea created perfect mirror-like reflections of the surrounding mountains. With hardly a ripple disturbing the water, guests gathered on deck to enjoy one of those rare Svalbard mornings when the landscape seemed almost impossibly serene.



The first destination of the day was the spectacular Monacobreen glacier, one of the most impressive tidewater glaciers in the region. As the ship approached the glacier front, signs of Arctic wildlife quickly appeared. Several Bearded Seals

rested comfortably on drifting ice floes, seemingly unbothered by the vessel's presence. Black-legged Kittiwakes dotted the ice, while Common Eiders and Black Guillemots paddled through the calm waters between the floating bergs.

Once the Zodiacs were launched, guests headed out for a closer look at Monacobreen's towering ice face. However, the first stop was another bearded seal hauled out resting on an ice floe, as it relaxed unbothered by the zodiacs. Guests were able to observe the red staining to the face, common to the animals foraging in the iron-rich



sediments in Liefdefjorden. The glacier's brilliant blue crevasses and heavily fractured front revealed a landscape in constant motion. Throughout the zodiac cruise, the glacier regularly reminded everyone of its power as chunks of ice calved from the face, crashing into the fjord below, sending waves rolling across the water. The water was littered with ice from the glacier, some pieces crystal clear, others dirty with sediment picked up by the glacier. The range of shades of blue in the ice kept everyone's cameras clicking.

Wildlife was abundant throughout the morning. Black-legged Kittiwakes rested on scattered ice floes in huge numbers between feeding trips to the glacier front. Several Arctic Skuas patrolled overhead or perched up on ice floes looking for opportunities to harass the kittiwakes in an effort to steal food. A second Bearded Seal suddenly appeared and spent time lazily bobbing on the surface of the icy waters, showing off his resplendent whiskers.

One of the highlights of the morning came when several small groups of Beluga were discovered feeding along the glacier front. Their white bodies were clearly visible as they broke the surface moving through the water. Above them, clouds of Kittiwakes swirled and dived, taking advantage of the same concentrations of food being pushed to the surface by the upwelling of subglacial water.



As if the morning had not already delivered enough wildlife encounters, an unexpected sighting brought excitement to every Zodiac. Resting on a small ice floe in the middle of the fjord was a young Polar Bear. Not long independent judging by its size, it lay sleeping on an ice floe not much larger than itself while slowly drifting in the current. It offered guests a memorable opportunity to observe the Arctic's apex predator in its natural habitat.



Following the wildlife-filled morning, the ship repositioned during lunch to Texas Bar, one of Svalbard's most famous historic trapping cabins built by the Nois family of trappers in 1927. Under continued sunshine and remarkably calm

conditions, guests were able to choose from a variety of hiking distances ashore.

The expedition team offered a challenging long hike for those eager to explore further into- and higher up in the surrounding landscape. Two medium hikes were offered as well; one tailored towards photography enthusiasts and a second for those wanting more of a leg stretch, but with plenty of time to take in the breathtaking scenery as well.

And of course, a leisurely walk for guests who preferred a relaxed slower pace and time to observe and reflect was organized as well.



With no wind and high temperatures for Arctic standards, conditions could hardly have been better for exploring and enjoying.

The historic cabin itself attracted plenty of attention. Inside, visitors discovered the eclectic collection of drinks traditionally left behind by travelers over the years, creating a unique and ever-changing display that has become part of Texas Bar's character and charm.

The tundra surrounding the cabin was alive with color. Purple and Tufted Saxifrage were in flower, adding vibrant patches of color to the rocky landscape. Equally striking were the countless fluffy seed heads of Mountain Avens, remnants from the previous summer that still covered large areas of the ground.

Wildlife sightings continued throughout the afternoon. A pair of Arctic Foxes delighted the photographers as they moved across the rocky slopes and tundra, while both the prized King Eiders and the more numerous Common Eiders were observed in the fjord offshore. Behind the cabin, a pair of Arctic Skuas were



clearly beginning to establish a nesting territory. Meanwhile, the singing Snow Buntings provided a contrasting soundtrack to the afternoon, accompanied by the occasional pair of Pink-footed geese flying overhead.

Back at the landing site by late afternoon, many guests chose to participate in one of expedition cruising's most memorable traditions: the polar plunge. Cheers and laughter echoed across the shoreline as brave participants ran into the frigid Arctic waters before making a rapid return to dry land and dry towels.



As if the day had not already provided enough memorable moments, the afternoon concluded with a surprise wedding proposal. Against the backdrop of Svalbard's dramatic wilderness, one guest got down on one knee and popped a question that was met with an enthusiastic "yes." Fellow travelers and expedition staff celebrated the happy couple, adding a deeply personal and unforgettable moment to an already remarkable day.

As the ship departed Texas Bar and continued its voyage through the Arctic wilderness, the evening recaps given by expedition guides on glaciology and Arctic Foxes allowed guests to reflect on a day that perfectly captured the magic of expedition cruising in Svalbard. Spectacular scenery, exceptional wildlife encounters, fascinating history, and unforgettable personal memories had combined created a day that only few would soon forget.

## Day 6 – Wednesday 10<sup>th</sup> June, In the pack ice

12:00 GPS Position: 81°28.4'N / 017°04.6'E

Wind: NW 4 • Sea: Ice 7/10 • Weather: Overcast • Air Temperature: 1°C

---

This morning Ali let us sleep in a bit, a late wake up call at 07:45 allowed us to catch up on some well-deserved rest after a couple of intense, but fantastic activity days. Ali informed us that we would soon enter the pack ice of the Arctic Ocean and that all staff would be scouting for mayonnaise-colored fluffy animals.



During breakfast we could feel the moment we started sailing through the ice as the ship sometimes vibrated while colliding with some larger ice floes.

After breakfast we made our way to the outside decks to witness with our own eyes the surreal vastness of the Arctic ice

stretching all the way to the horizon.

Visibility was good for most of the day, but at times fog banks would limit our views which offered us small, but welcoming breaks from staring through our binoculars.

While the staff and many of us continued trying to spot a polar bear, Pippa invited us to the lounge for a lecture about this magnificent and resilient animal. We had been very lucky so far with 6 sightings, but of course we wanted more. Pippa's lecture was very informative, and she fueled our motivation to find one in the beautiful pack ice even more.



After lunch some of us decided to have a small powernap whereas others spent more time out on deck.

At 15:00, Koen held a lecture about photography. Koen discussed different aspects of photography, he talked about what makes for a good photo, but he touched upon the exposure triangle, storytelling and composition as well.

While our tough M/V Ortelius made its way further through the ice, the galley team lit the barbecues. Tonight's dinner was a true Arctic dinner, and we all enjoyed freshly grilled steak and sausages while having a glass of gluhwein, beer or other refreshment on Ortelius' helicopter deck. In the meantime, some expedition staff members were still looking out for a bear, but unfortunately, without any luck. Some suspiciously looking pieces of ice were spotted, but none turned out to be a polar bear. Tomorrow we will continue the search... Good night, everyone!



## Day 7 – Thursday 11<sup>th</sup> June, In the pack ice

12:00 GPS Position: 80°31.8'N / 011°05.5'E

Wind: NE 2 • Sea: Calm • Weather: Overcast • Air Temperature: 1°C

---

Another day in the mesmerizing pack ice. The wake-up call was at 07:45, but Ali and some staff members were up on the bridge at 06:00 AM already because we were entering the beautiful vast pack ice once again. Our chief officer navigated the ship smoothly through the



ice to avoid *the ship* waking up too early while allowing the team and some guests to continuously scan the ice.

With fog banks coming and going, the visibility changed quite a lot. But at times we could scout very far and a few times our excitement levels increased when we spotted something that had some resemblance to a bear. Unfortunately, it was always a dirty piece of ice, and not the so much wanted polar bear.

At some point we did notice an ice floe with an old seal carcass on it and not too far away we saw another ice floe with blood trails and a seal skeleton on it. There was no meat or blubber left whatsoever so the bear that had made the kill had filled its stomach well. We didn't spot the successful hunter, but it was very clear we were in polar bear territory by seeing this gory scene.



For the bird lovers it was fantastic as there were two ivory gulls on the carcass picking out the last bits and pieces from the bones. Ivory gulls are not often seen, but since they are scavenger hunters, they are frequently on and around carcasses in the pack ice. The scene offered great photo opportunities.

At 11:00 we ran out of time, and the captain commanded the bridge officers to set course towards Longyearbyen. We loved being in the sea ice so much that we could easily have stayed another day or two but missing our flights home was unfortunately not an option. Ortelius made its way back top open water and started speeding up.

While sailing out we saw some distant whale blows while a pod of White Beaked dolphins was spotted as well. Later a blue whale was spotted, the largest animal to have ever lived on our planet. When it went down for a dive it showed its massive fluke and we were all watching in awe. What a fantastic sight!

In the afternoon Sasha shared with us amazing stories about his time in the ghost town of Pyramiden where he was the so-called keeper of this abandoned Russian settlement for a period of 5 years. Sasha surely had some fantastic anecdotes to which we all listened with great attention.

Time flies when you're having fun and after a week full of adventure, fantastic hikes, zodiac cruises and wildlife, our last evening onboard began. Ali invited us to the bar for our so-called *Captain's Cocktail* during which we toasted the trip together with the captain, the hotel managers and the expedition team. Claudio had made a fantastic slide show which was shown at the end and right before dinner. It was a wonderful video and a beautiful memory to take home with us.

After dinner we enjoyed the outside scenery while the ship steadily made its way back to Longyearbyen. What a fantastic trip it has been!

Day 8 – Friday 12<sup>th</sup> June – Longyearbyen, Disembarkation Day

08:00 GPS Position: 78°14.6' N / 015°32.6' E

Wind: NE 2 • Sea: Calm • Weather: Overcast • Air Temperature: 5°C

---

At 07:15 we enjoyed listening to Ali's voice one more time while she did the final wake-up call. We felt somewhat melancholic that our adventure was really ending today, but we also felt grateful and happy for the unforgettable week we had in Svalbard and the pack ice. With 6 polar bears, many foxes, reindeer, belugas, walrus and all the bird species, we had seen all animal species we could have wished for. That combined with fantastic weather, stunning scenery and landscapes, and all we could do was simply just smile.

We enjoyed our last breakfast onboard before saying our thank you's and goodbyes to the wonderful hotel crew. Once the buses had arrived, we made our way to the gangway where the expedition team had gathered to wish us a safe and pleasant journey onwards. We identified our luggage and then looked at Ortelius one more time before driving off.

We came on board as strangers, but during our amazing week we made many new friends and it was not easy saying goodbye.

Hopefully we'll meet again onboard one of Oceanwide's ships for another unforgettable adventure. Goodbye everyone, thank you for everything!

**Total distance sailed on our voyage: 1038 nautical miles**

**Most northern point sailed: 81°31.61 N, 017°48.10 E**

On behalf of Oceanwide Expeditions, Captain Ernesto Barria, Expedition Leader Ali Liddle, Hotel Manager Volodymir Cherdnychenko and all the crew and staff of *M/V Ortelius*, it has been a pleasure and a privilege travelling with you.



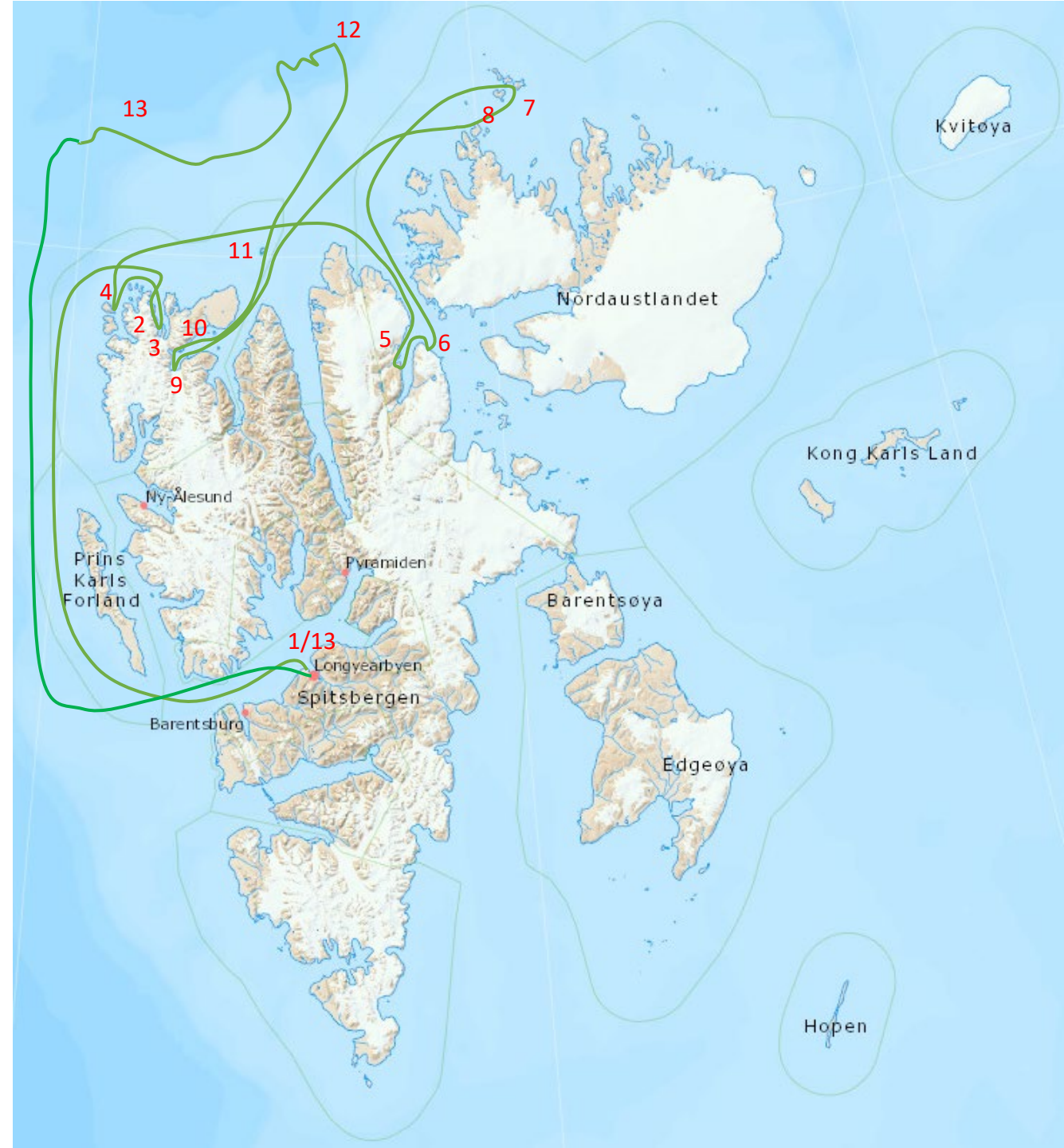
## Your Oceanwide Expeditions Team

Sasha, Claudio, Mark, Dr. Marieke, Ali, George, Pippa, Marco, Koen and Allan.

# North Spitsbergen Explorer

M/V Ortelius 05/06 – 12/06/26

- **1:** 05/06 Longyearbyen - Embarkation
- **2:** 06/06 Hamiltonbukta, Raudfjord - Zodiac Cruise
- **3:** Buchananhalvøya - Landing/Hike
- **4:** Smeerenburg - Ship cruise and Polar Bears
- **5:** 07/06 Faksevågen, Lomfjord - Landing/Hike
- **6:** Alkefjellet - Zodiac Cruise
- **7:** 08/06 Martensøya - Zodiac Cruise and Polar Bears
- **8:** Chermsideøya - Landing/Hike
- **9:** 09/06 Monacobreen, Liefdefjord - Zodiac Cruise and Polar Bear on ice
- **10:** Texas Bar - Landing/Hike and Polar Plunge
- **11:** Mofen Island - Ship Cruise
- **12:** 10/06 Into the Pack Ice
- **13:** 11/06 Pack Ice  
Sailing to Isfjorden - Fluking Blue Whale
- **14:** 12/06 Longyearbyen- Disembarkation



## Birds and Mammals of Svalbard - OTL 02

English	Latin	Dutch	German	5-Jun	6-Jun	7-Jun	8-Jun	9-Jun	10-Jun	11-Jun
Great Northern Diver	<i>Gavia immer</i>	Ijsduiker	Eistaucher							
Red-throated diver	<i>Gavia stellata</i>	Roodkeelduiker	Sterntaucher	X						
Northern Fulmar	<i>Fulmarus glacialis</i>	Noordse stormvogel	Eissturmvogel	X	X	X	X	X	X	X
Northern Gannet	<i>Morus bassanus</i>	Jan-van-gent	Basstöpel							
Whooper Swan	<i>Cygnus cygnus</i>	Wilde zwaan	Singschwan							
Bean Goose	<i>Anser fabalis</i>	Taigarietgans	Saatgans							
Pink-footed Goose	<i>Anser brachyrhynchus</i>	Kleine rietgans	Kurzschnabelgans		X			X		
Barnacle Goose	<i>Branta leucopsis</i>	Brandgans	Weisswangengans	X	X			X		
White-fronted Goose	<i>Anser albifrons</i>	Kolgans	Blässgans							
Greylag Goose	<i>Anser anser</i>	Grauwe gans	Graugans							
Brent Goose	<i>Branta bernicla</i>	Rotgans	Ringelgans					X		
Snow Goose	<i>Chen caerulescens</i>	Sneeuwgans	Schneegans							
Eurasian Wigeon	<i>Anas penelope</i>	Smient	Pfeifente							
Eurasian Teal	<i>Anas crecca</i>	Wintertaling	Krickente							
Mallard	<i>Anas platyrhynchos</i>	Wilde eend	Stockente							
Northern Pintail	<i>Anas acuta</i>	Pijlstaart	Spießente							
Tufted Duck	<i>Aythya fuligula</i>	Kuifeend	Reiherente							
Common Eider	<i>Somateria mollissima</i>	Eidereend	Eiderente	X	X	X	X	X		
King Eider	<i>Somateria spectabilis</i>	Konings eider	Prachteiderente		X	X		X		
Steller's Eider	<i>Polysticta stelleri</i>	Stellers eider	Scheckente							
Long-tailed Duck	<i>Clangula hyemalis</i>	Ilseend	Eisente							
Black Scoter	<i>Melanitta nigra</i>	Zwarte zee-eend	Trauerente							
Common Goldeneye	<i>Bucephala clangula</i>	Brilduiker	Schellente							
Rock Ptarmigan	<i>hyperboreus</i>	Alpensneeuwhoen	Alpenschneehuhn		X	X		X		
Eurasian Oystercatcher	<i>Haematopus ostralegus</i>	Scholekster	Austernfischer							
Ringed Plover	<i>Charadrius hiaticula</i>	Bontbekplevier	Sandregenpfeifer	X						

European Golden Plover	<i>Pluvialis apricaria</i>	Goudplevier	Goldregenpfeifer								
Sanderling	<i>Calidris alba</i>	Drieteenstrandloper	Sanderling								
Pectoral Sandpiper	<i>Calidris melanotos</i>	Gestreepte strandloper	Graubruststrandläufer								
Purple Sandpiper	<i>Calidris maritima</i>	Paarse strandloper	Meerstrandläufer	X		X	X	X			
Red Knot	<i>Calidris canutus</i>	Kanoetstrandloper	Knutt								
Dunlin	<i>Calidris alpina</i>	Bonte strandloper	Alpenstrandläufer								
Whimbrel	<i>Numenius phaeopus</i>	Regenwulp	Regenbrachvogel								
Common Redshank	<i>Tringa totanus</i>	Tureluur	Rotschenkel								
Ruddy Turnstone	<i>Arenaria interpres</i>	Steenloper	Steinwälzer								
Grey Phalarope	<i>Phalaropus fulicarius</i>	Rosse franjepoot	Thorshühnchen								
Red-necked Phalarope	<i>Phalaropus lobatus</i>	Grauwe franjepoot	Odinshühnchen								
Pomarine Skua	<i>Stercorarius pomarinus</i>	Middelste jager	Spatelraubmöwe						X		
Arctic Skua	<i>Stercorarius parasiticus</i>	Kleine jager	Schmarotzerraub-möwe		X	X	X	X			
Long-tailed Skua	<i>Stercorarius longicaudus</i>	Kleinste jager	Falkenraubmöwe								
Great Skua	<i>Stercorarius skua</i>	Grote jager	Skua			X		X			
Sabine's Gull	<i>Xema sabini</i>	Vorkstaartmeeuw	Schwalbenmöwe					X			
Black-headed Gull	<i>Larus ridibundus</i>	Kokmeeuw	Lachmöwe								
Common/Mew Gull	<i>Larus canus</i>	Stormmeeuw	Sturmmöwe								
Glaucous Gull	<i>Larus hyperboreus</i>	Grote Burgemeester	Eismöwe	X	X	X	X	X	X	X	X
Iceland gull	<i>Larus glaucoides</i>	Kleine burgemeester	Polarmöwe								
Herring Gull	<i>Larus argentatus</i>	Zilvermeeuw	Silbermöwe								
Lesser black-backed Gull	<i>Larus fuscus</i>	Kleine mantelmeeuw	Heringsmöwe					X			
Great black-backed Gull	<i>Larus marinus</i>	Grote mantelmeeuw	Mantelmöwe								
Kittiwake	<i>Rissa tridactyla</i>	Drieteenmeeuw	Dreizehenmöwe	X	X	X	X	X	X	X	X
Ross' Gull	<i>Rhodostethia rosea</i>	Rossmeeuw	Rosenmöwe								
Ivory Gull	<i>Pagophila eburnea</i>	Ivoormeeuw	Elfenbeinmöwe					X	X	X	
Arctic Tern	<i>Sterna paradisaea</i>	Noordse stern	Küstenseeschwalbe	X	X		X	X			
Common Guillemot	<i>Uria aalge</i>	Zeekoet	Trottellumme								
Brunnich's Guillemot	<i>Uria lomvia</i>	Dikbekzeekoet	Dickschnabellumme	X	X	X	X	X	X	X	X
Black Guillemot	<i>Cephus grylle</i>	Zwarte zeekoet	Gryllteiste	X	X	X	X	X	X	X	X

Little Auk	<i>Alle alle</i>	Kleine alk	Krabbentaucher	X	X	X	X		X	X
Puffin	<i>Fratercula arctica</i>	Papegaiduiker	Papageitaucher	X	X					
Barn Swallow	<i>Hirundo rustica</i>	Boerenzwaluw	Rauchschwalbe							
White Wagtail	<i>Motacilla alba</i>	Witte Kwikstaart	Bachstelze							
Meadow Pipit	<i>Anthus pratensis</i>	Graspieper	Wiesenieper							
Wheatear	<i>Oenanthe oenanthe</i>	Tapuit	Steinschmätzer							
Blackbird	<i>Turdus merula</i>	Merel	Amsel							
Snow Bunting	<i>Plectrophenax nivalis</i>	Sneeuwgor	Schneeammer	X	X	X	X	X		
Redpoll	<i>Carduelis flammea</i>	Barmsijs	Birkenzeisig							
Lapland longspur	<i>Calcarius lapponicus</i>	Ijsgors	Spornammer							
Fieldfare	<i>Turdus pilaris</i>	Kramsvogel	Wacholderdrossel							
Redwing	<i>Turdus iliacus</i>	Koperwiek	Rotdrossel							
Brambling	<i>Fringilla montifringilla</i>	Keep	Bergfink							
Gyr Falcon	<i>Falco rusticolus</i>	Giervalk	Gerfalke							

## MAMMALS

English	Latin	Dutch	German	5-Jun	6-Jun	7-Jun	8-Jun	9-Jun	10-Jun	11-Jun
Walrus	<i>Odobenus rosmarus</i>	Walrus	Walross	X	X		X	X		X
Bearded seal	<i>Erignathus barbatus</i>	Baardrob	Bartrobbe		X	X	X	X	X	
Ringed seal	<i>Phoca hispida</i>	Ringelrob	Ringelrobbe		X				X	
Harp seal	<i>Pagophilus groenlandicus</i>	Zadelrob	Sattelrobbe							X
Hooded seal	<i>Cystophora cristata</i>	Klapmuts	Klappmütze							
Common /Harbour seal	<i>Phoca vitulina</i>	Gewone zeehond	Seehund							
Minke Whale	<i>Balaenoptera acutorostrata</i>	Dwergvinvis	Zwergwal	X				X		
Sei Whale	<i>Balaenoptera borealis</i>	Noordse vinvis	Seiwal							
Blue Whale	<i>Balaenoptera musculus</i>	Blauwe vinvis	Blauwal							X
Fin Whale	<i>Balaenoptera physalus</i>	Gewone vinvis	Finnwal							X
Humpback Whale	<i>Megaptera novaeangliae</i>	Bultrug	Buckelwal							

Bowhead whale	<i>Balaena mysticetus</i>	Groenlandse walvis	Grönlandwal							
Sperm Whale	<i>Physeter macrocephalus</i>	Potvis	Pottwal							
Narwhal	<i>Monodon monoceros</i>	Narwal	Narwal							
Northern Bottlenose Whale	<i>Hyperoodon ampullatus</i>	Butskop	Entenwal (Dögling)							
Orca (Killer Whale)	<i>Orcinus orca</i>	Orka	Schwertwal (Orca)							
White-beaked Dolphin	<i>Lagenorhynchus albirostris</i>	Witsnuitdolfijn	Weisschnauzendelphin							<b>X</b>
Beluga	<i>Dephinapterus leucas</i>	Beloega	Weisswal			<b>X</b>	<b>X</b>	<b>X</b>		
Polar Bear	<i>Ursus maritimus</i>	Ijsbeer	Eisbär		<b>X</b>		<b>X</b>	<b>X</b>		<b>X</b>
Arctic Fox	<i>Alopex lagopus</i>	Poolvos	Polarfuchs		<b>X</b>	<b>X</b>	<b>X</b>	<b>X</b>		
Spitsbergen Reindeer	<i>platyrhynchus</i>	Rendier	Svalbard Renntier	<b>X</b>	<b>X</b>	<b>X</b>	<b>X</b>			
Sibling vole	<i>Microtus rossiaemeridionalis</i>	Oostelijke veldmuis	Südfeldmaus							
Short tailed Vole	<i>Microtus agrestis</i>	Aardmuis	Erdmaus							

---

# Ali Liddle – Expedition Leader

---



Originally from the UK, Ali spent 15 years living in the Falkland Islands where she worked as a Primary school teacher both teaching out in 'camp' and at the school in Stanley.

Latterly, she was employed as Education Officer for Falklands Conservation and shared her time between classroom teaching and conservation. In 1997, she spent 9 months living on South Georgia where she ran the Post Office and took every opportunity to hike, ski and explore the surrounding peaks and coastline.

She has published three books to date: *Plants of the Falkland Islands* and two art and craft books for children using penguins and albatross as the inspiration. Ali is a keen runner, having completed three marathons in the Falkland Islands and two in the UK, and she also enjoys cycling, hiking and camping. Ali has been working on Antarctic and Arctic expedition cruises with Oceanwide for more years than she cares to remember and works on all of the Oceanwide vessels at some point during the year. She has recently relocated from Northumberland to the Isle of Skye where she is renovating a cottage and enjoying the hiking opportunities of the island.

Her particular interest is natural history and the wildlife, and she enjoys sharing her knowledge of and passion for the polar regions.

---

## Pippa Low – Asst. Exp. Leader

---



Pippa is a skilled expedition leader, naturalist, lecturer, photographer, diver, and skipper with over 18 years of global guiding experience. Originating from the Scottish Highlands, she specializes in marine mammal science, including a Masters in Humpback Whale physiology.

Her extensive travels as a guide have taken her from Scotland to Australia, Indonesia, New Zealand, and predominantly to the polar regions of the Arctic and Antarctic. A skilled skipper and powerboat instructor, Pippa excels in navigating the world's most rugged environments, ensuring both adventure and safety for her guests.

Pippa has also worked as a field guide and skipper for natural history productions, facilitating immersive experiences that highlight the beauty and complexity of these ecosystems while sharing her knowledge and passion for storytelling.

Pippa is dedicated to sharing her passion for wildlife and wild spaces, whether on a ship, zodiac, ashore, or underwater. As a passionate photographer, Pippa is dedicated to helping guests capture stunning moments of wildlife and landscapes. She revels in the unpredictability of nature, making every expedition a unique experience.

---

# Allan White - Expedition Guide

---



Allan was born and raised in the Falkland Islands. He's a fifth generation Islander, and a descendant of one of the original British colonists in 1840. His higher education was completed in England, after which he embarked on a military career.

He joined the British Army aged 17. After serving in West Germany for two years during the Cold War period, he completed deployments in Northern Ireland, Cyprus as a United Nations peace-keeper, and with British Forces South Atlantic Islands. He left the Army to settle back in the Falklands.

While working as a Port Agent, Allan worked with the late Lars-Eric Lindblad, the inspirational pioneer of the small-ship expedition cruising concept. He encouraged Allan to become a Zodiac driver and go to sea for a year. Thirty years later, he's still at it. His voyages have taken him all over the world, with particular focus on the Polar regions. His travel experience ranges from 90° North to 78° South.

In the Falklands, Allan and his wife owned and operated their own tourist lodge for over a decade. More recently they managed a privately owned island, where they were the sole residents for almost 5 years, with thousands of albatrosses, penguins and seals for neighbours.

Allan is an experienced guide and Zodiac driver, with a keen interest in natural history and heroic age polar exploration. He lives in the Falklands capital Stanley, with his wife Jacqui.

---

# Claudio Ghiglione – Asst. Exp. Leader

---



Claudio was born in Italy in 1983. He is a marine ecologist specialised in polar regions, expedition guide and nature photographer.

Interested in science and nature since he was very young, he graduated first in *Marine Environmental Sciences* (BA) and then in *Marine Science* (MA). In March 2017 he obtained a *PhD in Earth, Environmental and Polar Sciences* run in cooperation with the Italian National Antarctic Museum (Italy) and the British Antarctic Survey in Cambridge (UK).

For several years he worked as a polar researcher focusing his work mainly on the South Pole (Antarctica); his objective is to analyse and evaluate information used for ecological modelling and possible future scenarios following global warming. During his academic career, he actively takes part in some scientific expeditions both in Arctic and in Antarctica in cooperation with Norway and England.

His passion for travel, mainly to cold and often inhospitable places, and his career as a photographer led him to travel a lot, creating and managing – often in complete autonomy – itineraries and logistics. In 2017 – thanks to his professional experience, the skills acquired over the time and the need to spend more time on the field – he starts working full time as a guide Oceanwide.

Specialised in nature, scientific and travel photography, Claudio uses his photos as a means of telling stories to draw attention mainly to his main subjects, namely animals, nature and environment. In the 2019 he published his first book ‘Polar Lights’ with whom he shares the passion for nature photography.

---

# George Kennedy – Expedition Guide

---



George is an Australian social scientist specialising in polar geopolitics. He completed a Masters in Anthropology at Monash University in 2016 and a Graduate Diploma in Antarctic Governance at the Australian Institute for Marine and Antarctic Science in 2021. Since completing his studies, George has worked within the policy office of the Australian Antarctic Division, collaborating with other Antarctic Treaty Parties to develop sustainable tourism practices, environmental protection frameworks and fisheries management strategies.

Prior to his political studies, George worked as an ALS Paramedic in Australia, as well as a community development coordinator for conservation organisations in Latin America. George has a passion for travel, boats, and motorcycles. Over a three-year period, he rode a motorcycle from Patagonia to Mexico, exploring Latin America on two wheels. It was during his time in Patagonia that his passion for the Polar Regions developed, working closely with conservation organisations in Tierra del Fuego and visiting Antarctica for the first time in 2017. George has been guiding in Antarctica and the Arctic since 2019, sharing stories of its incredible wildlife, landscapes and, of course, its unique politics!

---

# Marco Rosso – Expedition Guide

---



Marco was born in the region of Prosecco & Tiramisù in Northern Italy.

He graduated in Mechanical Engineering at the University of Padua, his native city, and subsequently achieved a Master's degree in "Turbomachinery and Fluid Dynamics" at the Von Karman Institute in Brussels, Belgium.

Currently he is studying Earth Science at Stockholm University, Sweden.

After a few years working in the automotive industry, he decided to embark himself on a new quest. For two years he backpacked from the tropical forests of Central America, through the snowy peaks of the Andean Cordillera, rolling all the way down to the tip of South America.

The raw and powerful beauty of Patagonia convinced him to swap Mother Nature wonders for mankind artifacts. Fascinated by applied geophysics, he therefore decided to use his deep and broad knowledge in thermodynamics and fluid mechanics to satisfying his innate curiosity, thereby started to study Earth Science.

During the last decade he has been living in Puerto Natales, Chile; leading groups as a trekking guide and tour leader in some of the most beautiful and rugged trails of Patagonia and for four years has started to join expeditions to the Arctic and the Antarctic on board of Oceanwide vessels.

---

# Koen Hoekemeijer – Exp. Guide

---



Koen Hoekemeijer was born in 1974 in The Netherlands. When it comes to nature and wildlife Koen was quite a late bloomer as he had always been more into nightlife and sunny beaches. But that all changed when he discovered his passion for wildlife and photography in 2009 in Costa Rica. It was during this trip that Koen saw his first humpback whales and he fell in love with them instantly. Not only did it make him eager to see more and different types of whales in locations all over the world, but he also wanted to learn to take better photos of these amazing creatures. And with the love for whales

and photography, came a broader passion for all sorts of wildlife.

Since that memorable vacation in 2009, Koen has been travelling the planet to see and photograph the world's most beautiful places. Usually from boats, jeeps or simply face down in the mud, but since 2016 also underwater. Snorkeling in the presence of whales and orcas is bringing Koen pure happiness.

Among his favourite animals are whales, orcas, penguins, tigers and jaguars. But in between safaris, he also likes to do street photography and capture life and portraits of people all over the world.

Koen believes that travelling does not only enrich your life, it also makes you more humble, more appreciative and it provides new levels of perspective and understanding. Koen has won the prestigious WWF Frans Lanting Photo contest, and in 2020 he won the Ellen Fitzgibbon Memorial Photography competition. It's Koen's dream to one day have a Vizsla dog and own a small cabin somewhere in northern Norway surrounded by snow and trees ;).

---

# Alexander Romanovskiy – Exp. Guide

---



Alexander Romanovskiy comes from Saint-Petersburg, the Northern capital of Russia. He was born in 1981. After having graduated from the boarding school Alexander entered Saint-Petersburg State University, where he spent 5 years studying physical geography, ecology, regional geography and international tourism. Afterwards he was working on his PhD thesis in Herzen State Pedagogical University of Russia, doing geocological researches.

In the year of 2011 however, Alexander decided to pause his scientific career and start doing something completely

different, which means working in tourism and traveling the world. He spent 2 seasons working as a trekking guide in Fann mountains (Tajikistan), 1 season on Novolazarevskaya Antarctic scientific station (Queen Maud Land, Antarctica) working as a member of a guesthouse crew.

Since February of 2012 most part of the year he spends on Svalbard. For five seasons in a row Alexander has been living and working as a guide in a ghost town of Pyramiden. In 2016 a new page in Alexander's guiding career was opened: he started working as a naturalist guide on cruise ships in polar regions of the world – Svalbard and Antarctica.

3 to 4 months a year Alexander dedicates to his main passion – traveling the world. No public transport, no hotels, only hitch-hiking and staying overnight with locals or sleeping in a tent. This way he has already visited almost all Soviet republics, Middle East (Iran, Turkey), Asia (China), South America (Argentina, Chile, Paraguay), and it is hopefully far not the end! The world is big, friendly and interesting to explore!

---

# Mark Whiffin - Expedition Guide

---



Mark holds a Master's Degree in Conservation Biology and is an ornithologist and birder with extensive field experience. His passion for birds and travelling started from a very young age in East Sussex, England and expanded from there.

After finishing studying at university, he participated in, and led numerous expeditions and scientific research projects to remote areas of the world in search of birds with a particular emphasis on threatened and endemic species.

Mark first visited Antarctica in 2018 employed by the British Antarctic Survey, and subsequently spent five years living and working on Bird Island, South Georgia as a Zoological Field Assistant working with the penguins and petrels. He developed a deep love for the Southern Ocean, its scenery and the birds that call it home, "seeing the first Cape Petrels on any trip always gives a feeling of arriving home".

In his free time Mark enjoys trekking, running or cycling. He is also a keen photographer and videographer who enjoys documenting and sharing his passion for birds, travel and wild places, his images have been used various NGOs, employers, newspapers and online. He looks forward to sharing your expedition with you.

---

# Marieke Timmerman - Ships Doctor

---



This is the **ship's medical doctor** for everybody on board: passengers, staff and crew. She is from the Netherlands. After medical school, she worked as a resident in surgery for a year. After that, she worked as a resident in ENT (ear nose throat): research and clinics for four years. Furthermore, she was a doctor in a nursing home. In 2014 she started her training becoming a General Practitioner (GP) and with a lot of pleasure she works as a GP in Hilversum and Haarlem (the Netherlands) nowadays. This is her seventh expedition to Arctica/ Antarctica as a doctor and

hopefully not her last!

In her days off, she loves to do sports (tennis, padel, kitesurfing, to the gym, skiing), go to the beach which is nearby her house, meeting up with friends and to travel.

## **Many medical problems can be prevented:**

*Seasickness* is a common problem in these waters. It is easier to prevent it than to treat it. Please let her know if you have any questions or if you need medication.

*Accidents and injuries:* always one hand for the ship, one hand for yourself. Carry your things in a backpack or around your neck for example, to have both hands free when moving around a sailing ship with so many stairs, heavy doors and slippery decks. And watch out for your fingers with slamming doors!

On a ship, *contagious diseases* are easily spread around, like Covid19. Please wash your hands after every toilet visit and before every meal and use the alcohol suspenders in front of the restaurant. Furthermore, cough in your elbow instead of your hand.

## WELCOME ABOARD!

*Luggage will be delivered to your cabin. Please make check to make sure you have received all your luggage. If you have any extra luggage in your cabin – please notify a crew member.*

**\*\* Tea and coffee are always available in the lounge on deck 6 \*\***

±1700 **Welcome & safety briefing** - Please join us in the **lounge (deck 6)** for a **mandatory** safety briefing and lifeboat drill. **All passengers must attend.** Thank you.

### **Lifeboat Drill**

**All guests** please collect your orange lifejackets from your cabin and proceed to the passenger MUSTER STATION in the **lounge (deck 6)**.

1845 **Welcome Meeting.** Please join your hotel manager Volodymyr in the **lounge (deck 6)** for an introduction to our ship Ortelius.

1900 This will be followed by welcome drinks with Captain Barria and a chance to meet the Expedition team and learn more about our voyage around North Spitsbergen.

1930 **Buffet Dinner** is available in the **dining room** for 1 hour (deck 4)

**After dinner we will issue rubber boots to all new guests. Please listen for announcements.**

*We will sail into open sea this evening and the ship may move – please secure your belongings and be careful when moving around the ship. Take your seasickness medication before we head out into open sea- the doctor will be available in the lounge after dinner to assist.*

- 0715      **Wake up call** - Good Morning!
- 0730      **Breakfast Buffet** is available in the **dining room** for 1 hour (deck 4).
- 0830      **Mandatory AECO briefing, Polar Bear safety briefing and Zodiac briefing. All passengers please attend. Repeat guests may leave the meeting before the zodiac briefing.**
- TBA      **Hamiltonbukta.** This morning we hope to take you out on a zodiac cruise in Hamiltonbukta. Here there are high seabird cliffs where we see nesting guillemots and kittiwakes and we sometimes we see Arctic foxes along the shore. Please dress warmly for your cruise.
- 1230      **Lunch Buffet** is available in the **dining room** for 1 hour (deck 4).
- TBA      **Buchananhalvøya.** Further down into Raudfjord we come to the peninsula where we hope to take you ashore to explore the area. We will divide into our hiking and walking groups so we can all enjoy the landing at a pace that suits us.  
Long Hikers please come to the gangway first and everyone else can follow straight away afterwards.
- 1900      **Recap** – Please join the Expedition team in the lounge (deck 6) for our daily recap and briefing.
- 1930      **Dinner** is served in the **dining room** (deck 4) Please be prompt as this is plated service. Thank you.

- 0715      **Wake up call** - Good Morning!
- 0730      **Breakfast Buffet** is available in the **dining room** for 1 hour (deck 4).
- 0830      **Faksevågen.** This morning we hope to take you ashore at Faksevågen in Lomfjord. There is good tundra vegetation, so we often see reindeer and sometimes ptarmigan. There are beautiful views up to the glacial outwash plain and glacier.  
Long hikers please come to the gangway first for your hike and everyone else please follow afterwards for medium and leisurely hikes.
- 1230      **Lunch Buffet** is available in the **dining room** for 1 hour (deck 4).
- TBA      **Alkefjellet.** This afternoon we hope to take you out on a zodiac cruise at Alkefjellet. The sea cliffs here are over 100 metres high and are home to around 60,000 pairs of Brünnich's guillemots. It is one of the most impressive seabird cliffs in Svalbard. We will be out in the boats for 1.5 to 2 hours so please dress warmly.
- 1830      **Recap** – Please join the Expedition team in the lounge (deck 6) for our daily recap and briefing.
- 1900      **Buffet Dinner** is available in the **dining room** for 1 hour (deck 4)

0715      **Wake up call** - Good Morning!

0730      **Breakfast Buffet** is available in the **dining room** for 1 hour (deck 4).

0830      **Phippsøya.** This morning we hope to be able to land at Phippsøya and offer our usual walking groups. This island sometimes has walrus on the beach but is also a place where polar bears are often seen. There is an old trapper's hut near the beach and the walking is relatively easy on the beach and low lying gravel.

Long Hikers please come to the gangway first.

1230      **Lunch Buffet** is available in the **dining room** for 1 hour (deck 4).

### Expedition Afternoon

This afternoon we will explore the Seven Islands' and Nordaustlandet coastlines. Our activities will be determined by weather and wildlife. *Please listen for announcements.*

1900      **Recap** – Please join the Expedition team in the lounge (deck 6) for our daily recap and briefing.

1930      **Buffet Dinner** is available in the **dining room** for 1 hour (deck 4)

- 0745      **Wake up call** - Good Morning!
- 0800      **Breakfast Buffet** is available in the **dining room** for 1 hour (deck 4).
- 0915      **Monacobreen.** This morning we hope to take you out on a zodiac cruise at the impressive Monacobreen. This is one of the most iconic glacier fronts in Svalbard. This is named after Prince Albert I of Monaco, for his 1898-1907 oceanographic expedition to map the area. Dress warmly and enjoy the ice.
- 1230      **Lunch Buffet** is available in the **dining room** for 1 hour (deck 4).
- TBA      **Texas Bar.** This afternoon we hope to take you ashore at Texas Bar where there is one of the best trapper huts in Svalbard. Maybe the bar will be open!  
It is also a really good place hike in the lower hills (we promise!) so we will offer our usual hiking groups.  
At the end of the landing we will offer you the chance to take a Polar Plunge – a swim in the Arctic waters! We'll bring the towels, you bring the insanity!  
**Long hikers** please come to the gangway first.
- 1900      **Recap** – Please join the Expedition team in the lounge (deck 6) for our daily recap and briefing.
- 1930      **Buffet Dinner** is available in the **dining room** for 1 hour (deck 4)

We will be arriving at the ice edge before breakfast and will spend the day in the ice enjoying the ice experience and looking for wildlife.

- 0745      **Wake up call** - Good Morning!
- 0800      **Breakfast Buffet** is available in the **dining room** for 1 hour (deck 4).
- 1100      **Polar bears.** We have already been very lucky to see polar bears on this voyage but if you would like to learn more about these iconic Arctic animals then please join Pippa in the Lounge.
- 1230      **Lunch Buffet** is available in the **dining room** for 1 hour (deck 4).
- 1500      **Photography.** Koen will be in the lounge to give a photography presentation so if you would like to learn more about improving your skills and images then please join him in the Lounge
- 1830      **Recap** – Please join the Expedition team in the lounge (deck 6) for our daily recap and briefing.
- 1900      **Special Arctic Dinner** is served on Deck 6 on the heli deck. Dress warmly and join us for our BBQ!

We will be going into the ice again at 0600 and will spend the morning enjoying the ice experience and looking for wildlife.

- 0745      **Wake up call** - Good Morning!
- 0800      **Breakfast Buffet** is available in the **dining room** for 1 hour (deck 4).
- 0930      **Sea Ice.** We have seen beautiful sea ice during the last days but if you would like to learn more about the ice then please join Marco in the Lounge
- 1115      **Fridtjof Nansen – Arctic Drift Expedition.** Nansen sailed the Fram up into the pack ice to find out about the drift of the pack ice between 1893 and 1896. Please join Allan in the lounge to hear of his expedition.
- 1230      **Lunch Buffet** is available in the **dining room** for 1 hour (deck 4).
- 1330      **Rubber Boots.** We will call you by deck to return your rubber boots. Please make sure you have taken socks and liners out of them!
- 1500      **The Ghost Town of Pyramiden.** Sasha was the manager of the abandoned coal mining town of Pyramiden on Svalbard. If you would like to hear his stories then please join him in the Lounge.
- 1815      **Captain's Cocktails.** Please join us in the Lounge for a farewell drink with Captain Barria and the expedition team. We will also explain plans for disembarkation in Longyearbyen and look back on our voyage.
- 1900      **Farewell Dinner** is served in the **dining room** (deck 4)

- 0715      **Wake up call** - Good Morning! Please place your large check in luggage outside your cabin before you go to breakfast.
- 0730      Breakfast Buffet is available in the dining room for 1 hour.
- 0900      All guests on Flight **SK4493 (11:35)** and **SK4425 (12:35)** will take a bus from the ship to the airport. Please check that your luggage goes on the bus with you. **NO LABEL**
- 0930      All guests on the later flight **DY391 (14:05)** will take a bus to Longyearbyen Butikken and meet again at the drop off place at **1145** to go to the airport at **1200**. **ORANGE LABELS**
- 0930      All guests staying in Longyearbyen for additional days please take the bus to Longyearbyen Butikken. Your luggage will be available for collection from the truck at Butikken at **1130**. **RED LABELS**

From the Captain, all the crew and the Expedition Team on board the MV Ortelius, we wish you safe onward travel, and thank you for sharing this incredible voyage with us. We look forward to sailing with you again in the future.